

BELDEN



Quality
Precision
Reliability

Belden Stainless Steel Universal Joints



Belden Inc. serves the power transmission world-market with universal joints and drive shaft assemblies in various grades of stainless steel. Belden can supply standard universal joints as well as customized universal joints and complete drive shaft assemblies to the customer's exact specifications.

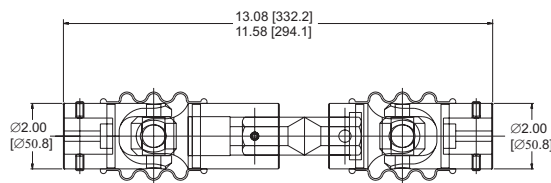
Belden's stainless steel universal joints can be found in everything from underwater oil field equipment to food processing applications. Universal joints can be modified for a particular stainless steel grade, hub configuration, lubricant and additional environmental protection such as boot covers or painting.



The Belden universal joint has become recognized as the most precise and reliable universal joint on the world-wide market today.

Belden is committed to providing reliable, continually tested universal joints of the highest quality.

Custom Assemblies with Custom Shafts are Our Specialty



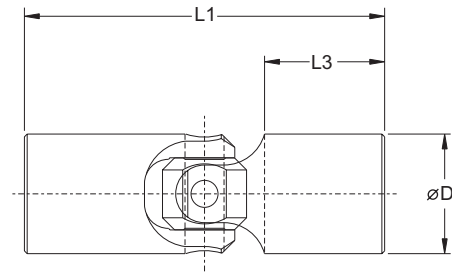
Belden's complete product line has the right solution. Hubs and connecting shafts can be customized per customer's exact specifications.

Materials available include:

- AISI 303 [DIN 1.4305]
- AISI 304 [DIN 1.4301]
- AISI 316L [DIN 1.4404]
- AISI 416 [DIN 1.4005]
- AISI 420 [DIN 1.4034]

Standard Stainless Steel Universal Joints

Belden Inc. manufactures an extensive standard line of stainless steel universal joints. Based on the standard design concept, Belden engineers can develop customized solutions for virtually any application. The standard stainless steel joint is made from AISI 303 and AISI 416 stainless steel. The joint yokes are 303 and the pins & blocks are made from hardened 416 stainless steel to provide higher strength and improved wear resistance. Yokes can be made from 303, 304, 316L, 416 or 420 stainless steel to meet the customer's exact application specifications. For additional environmental protection, pins & blocks can be covered by lubricant retaining boots or manufactured from higher grades of stainless steel upon request.



Single Joints with AISI 303 yokes and AISI 416 pins & blocks

Part No.	øD in [mm]	L1 in [mm]	L3 in [mm]	M Breaking lbf-in [Nm]	M Operat. max. lbf-in [Nm]
UJ-SS500	0.495 [12.57]	2.00 [50.8]	0.75 [19.1]	240 [27.1]	48 [5.4]
UJ-SS625	0.620 [15.75]	2.25 [57.2]	0.81 [20.6]	475 [53.7]	95 [10.7]
UJ-SS750	0.745 [18.93]	2.69 [68.3]	0.95 [24.1]	875 [98.9]	175 [19.8]
UJ-SS875	0.870 [22.10]	3.00 [76.2]	1.03 [26.2]	1260 [142.4]	250 [28.3]
UJ-SS1000	0.995 [25.27]	3.38 [85.7]	1.19 [30.2]	1575 [178.0]	315 [35.6]
UJ-SS1125	1.120 [28.45]	3.50 [88.9]	1.22 [31.0]	2250 [254.2]	480 [50.8]
UJ-SS1250	1.245 [31.62]	3.75 [95.3]	1.25 [31.8]	3400 [384.2]	680 [76.8]
UJ-SS1500	1.495 [37.97]	4.25 [108.0]	1.41 [35.7]	7250 [819.1]	1450 [163.8]
UJ-SS1750	1.745 [44.32]	5.00 [127.0]	1.60 [40.6]	10500 [1186.3]	2100 [237.3]
UJ-SS2000	1.995 [50.67]	5.50 [139.7]	1.69 [42.9]	15600 [1762.6]	3120 [352.6]

Standard operating angle 35°, higher operation angles are available upon request.

Single Joints with AISI 316 yokes and AISI 316L pins & blocks

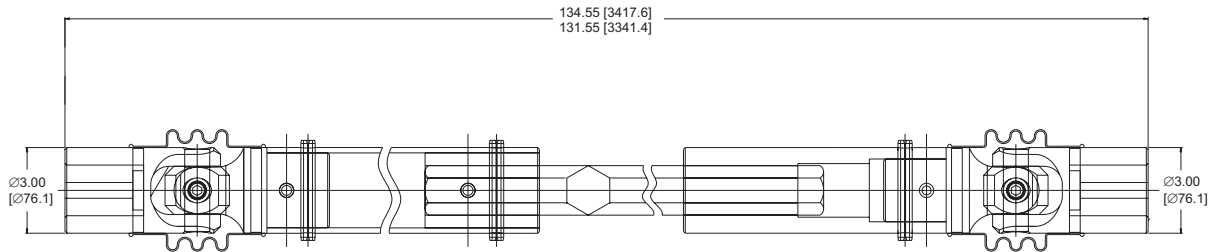
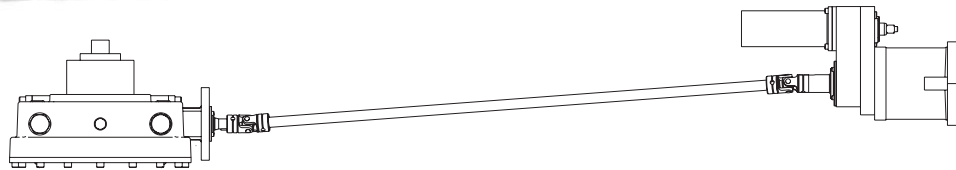
Part No.	øD in [mm]	L1 in [mm]	L3 in [mm]	M Breaking lbf-in [Nm]	M Operat. max. lbf-in [Nm]
UJ-SS1250	1.245 [31.62]	3.75 [95.3]	1.25 [31.8]	2550 [288.2]	510 [57.6]
UJ-SS2000	1.995 [50.67]	5.50 [139.7]	1.69 [42.9]	11700 [1320.0]	2340 [264.0]
UJ-SS3000	2.995 [76.07]	9.25 [235.0]	3.00 [76.2]	26400 [2982.8]	5280 [596.6]

Standard operating angle 35°, higher operation angles are available upon request.

Custom Stainless Steel Universal Joints Assemblies

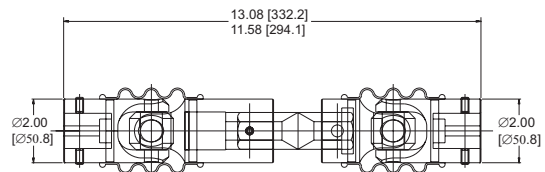
Custom applications can require special material. Belden can machine a wide variety of materials including 316L stainless steel.

One such application that required a higher grade of stainless steel was connection shafts for an Under Sea Oil Valve Actuation. The shafts were telescoping in length to adapt to small movements and relocation of the equipment's position. All universal joint yokes as well as pin and block components were made from 316L for extreme corrosion resistance. Additionally, pins & blocks were coated with a PTFE dry lubricant coating to prevent binding and to ensure reliable operation.



Belden provided the customer with complete drive shafts that could easily be disassembled for transportation and reassembled for installation.

Universal joints, with an outside diameter of 2"[50mm] and 3"[76mm], were used to build assemblies with lengths ranging from 13"[330mm] to 134"[3400mm].



Contacting Belden



Belden Inc.
2500 Braga Drive
Broadview, Illinois 60155
USA
Tel: +1 708 344-4600
Fax: +1 708 344-0245



Belden Inc.
Niederlassung Deutschland
Harnackstrasse 6
39104 Magdeburg
Germany
Tel: +49 (0) 3912 52 58 11
Fax: +49 (0) 3912 51 46 73

www.BeldenUniversal.com